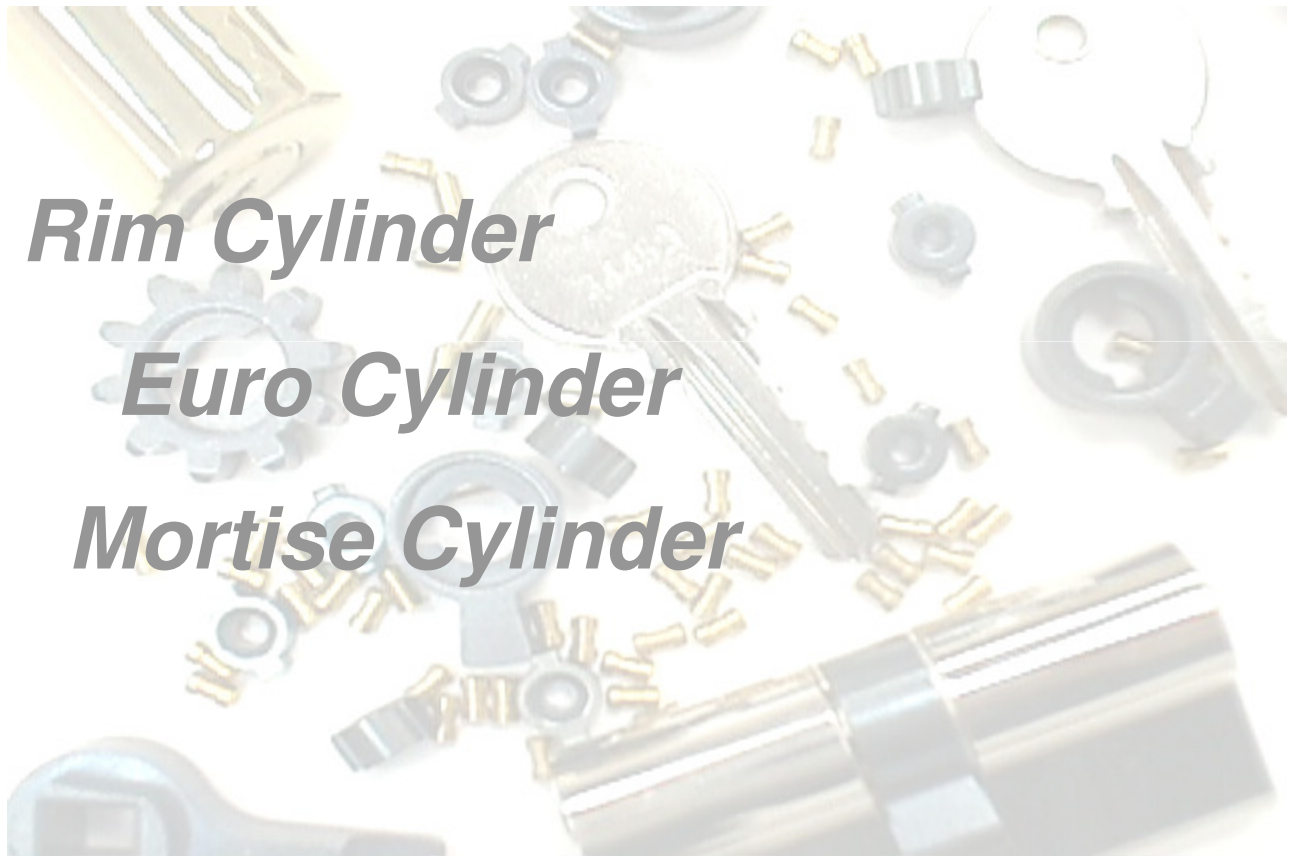


Kin Kei Hardware Industries Limited

E-mail: kinkei@hardware.com.hk Website: www.hardware.com.hk



VOLAR®

INDEX

Euro Profile Cylinders

- A) Yale Keyway
- B) Single Row Flat Pointed Key
- C) Double Row Flat Pointed Key
- D) Telescopic Pin Flat Pointed Key
- E) Oval Profile Cylinder

Rim Cylinder

- A) 'S' keyway
- B) Single row flat pointed keyway
- C) Double row flat pointed keyway

Mortise Cylinder

- A) Mortise Rim Cylinder
 - 'S' keyway
 - Single row flat pointed keyway
 - Cross key cylinder
- B i) Brass Mortise Cylinder
 - 'S' keyway
 - Single row flat pointed keyway
- ii) Zinc Alloy Mortise Cylinder
 - 'S' keyway

Others





Test Verification of Conformity

Verification Number: 241111090GZU-VOC001

On the basis of the tests undertaken, the sample<s> of the below product have been found to comply with the requirements of the referenced specification<s>/standard<s> at the time the tests were carried out. This verification is part of the full test report<s> and should be read in conjunction with it <them>.

Applicant Name & Address:	KIN KEI HARDWARE INDUSTRIES LIMITED RM704, EASTERN CENTRE, 1065 KING'S ROAD, TAI KOO, HONG KONG								
Product Description:	4-ANTI(anti-drill, anti-pick, anti-bump & anti-snap)EURO PROFILE CYLINDER, 4-ANTI(anti-drill, anti-pick, anti-bump & anti-snap)PROFILE CYLINDER with THUMB TURN								
Ratings & Principle Characteristics:	LK5283, LK5291N: <table><tr><td>1</td><td>6</td><td>0</td><td>0</td><td>0</td><td>C</td><td>5</td><td>D</td></tr></table>	1	6	0	0	0	C	5	D
1	6	0	0	0	C	5	D		
Models/Type References:	LK5283, LK5291N								
Brand Names:	/								
Specification<s>/Standards:	EN 1303:2015 Building hardware — Cylinders for locks — Requirements and test methods								
Verification Issuing Office Name & Address:	Intertek Testing Services Shenzhen Ltd. Guangzhou Branch Room 4103 & 4203, No. 63, Punan Road, Huangpu District, Guangzhou, China								
Date of Tests:	2024-11-11~2024-12-09								
Test Report Number(s):	241111090GZU-001 dated 2024-12-09								

Signature

Name: Nelson Zhu
Position: Technical Supervisor
Date: 09 December 2024

This Verification is for the exclusive use of Intertek's client and is provided pursuant to the agreement between Intertek and its Client. Intertek's responsibility and liability are limited to the terms and conditions of the agreement. Intertek assumes no liability to any party, other than to the Client in accordance with the agreement, for any loss, expense or damage occasioned by the use of this Verification. Only the Client is authorized to permit copying or distribution of this Verification. Any use of the Intertek name or one of its marks for the sale or advertisement of the tested material, product or service must first be approved in writing by Intertek. The observations and test/inspection results referenced in this Verification are relevant only to the sample tested/inspected. This Verification by itself does not imply that the material, product, or service is or has ever been under an Intertek certification program.

European Standard DIN EN 1303

Classification Report Profile cylinder as per EN 1303:2005

Test Report 206 35920 R1



Client **KIN KEI HARDWARE INDUSTRIES LIMITED**

1065 KING'S ROAD,
TAI KOO, HONG KONG
CHINA

Basis

EN 1303 : 2005 "Building
Hardware - Cylinders for locks -
Requirements and test meth-
ods"

Corrigendum DIN EN
1303:2008-09 corrigendum 1

German version
DIN EN 1303:2005-05

Classification Report 206 35920
dated 27 August 2008

Representation

Construction product	5-pin profile cylinder
Designation	"profile cylinder – ST-60"
Product description	Profile cylinder with plug, body and detainers made of brass, 5 single-row, spring-loaded detainers, bit with cam, in double cylinder version for use as single locking.
Cylinder length	60 mm – 100 mm (total length)



According to EN 1303:2005, the coding system for the
profile cylinder is as follows:

Category of use	Durability	Door mass	Fire resistance	Safety	Corrosion resistance	Key related-Security	Attack-resistance
1	6	-	0	0	C	3	0

Instructions for use

The present test report serves to demonstrate conformance with the requirements for profile cylinders as per EN 1303 : 2005.

Validity

The data and results given relate solely to the tested and described test specimen.

Notes on publication

The ift-Guidance Sheet „Conditions and Guidance for the Use of ift Test Documents“ applies.

The cover sheet can be used as abstract.

Contents

The test report comprises a total of 22 pages.

- 1 Object
 - 2 Procedure
 - 3 Detailed results
 - 4 Overall assessment
- Annex 1 (16 pages)

ift Rosenheim
26 January 2011

Christian Kehrer

Christian Kehrer, Dipl.-Ing. (FH)
Head of Testing Department

A. Spreitzer

Alexander Spreitzer
Operating Product Officer
Building Components



Euro Profile Cylinders - Yale Keyway Series

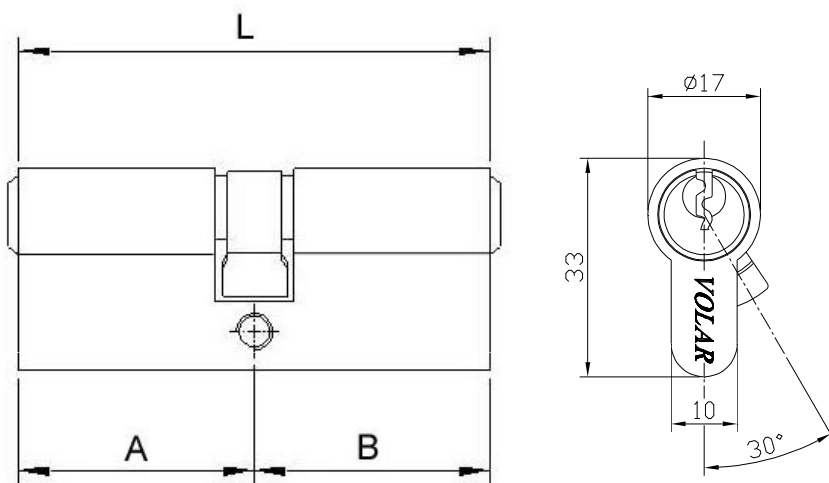
A. Yale Keyway Series(LK1788)

Tested in accordance with Europe standard DIN EN 1303:2015

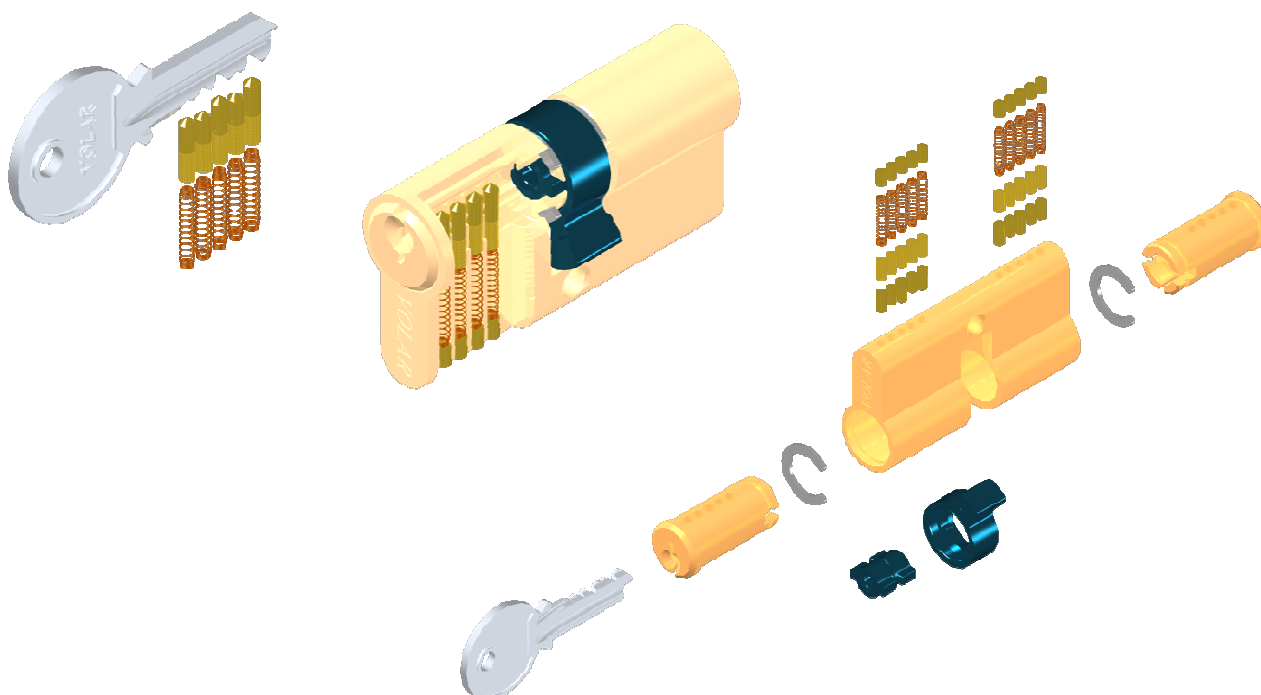
Brass profile lock body with sintered cam and 3 brass keys

Function available for Order

- Anti-drill Pins
- Eight Turning Position
- Panic Function
- Gear Wheel Series (10 teeth / 14 teeth)
- Single Side with Thumb Turn
- Changeable Knob Fixing Function



Pin	L(mm)	A	B
4	56	28	28
5	60	30	30
5	62	30	32
5	65	30	35
5	70	30	40
5	70	35	35
5	75	30	45
5	75	35	40
5	80	30	50
5	80	40	40
5	85	30	55
5	85	40	45
5	90	45	45
5	95	30	65
5	95	40	55
5	100	40	60
5	100	50	50
5	105	50	55
5	110	50	60
5	120	65	55



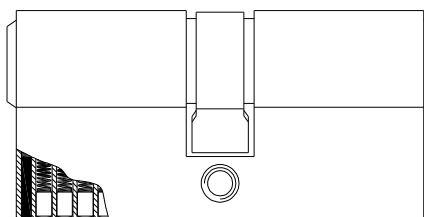
Euro Profile Cylinders- Yale Keyway Series

Euro Profile Cylinder Anti-drill Pins (LK5209)

Brass profile body with sintered cam and 3 brass keys.

i. Single Anti-drill Pin Series

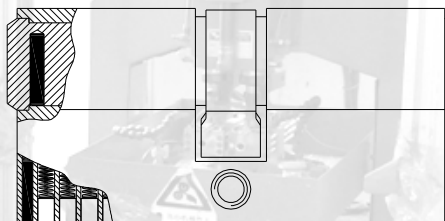
Tested for 5 mins drilling with 5mm drilling bit on housing.



ii. Triple Anti-drill Pins Series

Tested for 5 mins drilling with 5mm drilling bit on both rotor and housing according to DIN EN 1303:2015

* Available upon request with minimum additional charge



Euro Profile Cylinders- Yale Keyway Series

Euro Profile Cylinder with 4-ANTI functions

Yale keyway cylinder. Brass extruded lock body with sintered cam and 3 keys.
[Certified to European Standard EN1303:2015]



LK5291

LK5291 with 4 anti-functions
anti-drill, anti-pick, anti-bump, anti-snap
and 6pins, size: 70mm – 100mm



LK5291N

LK5291N with 4 anti-functions
anti-drill, anti-pick, anti-bump, anti-snap
with 6pins and peanut thumb turn,
size: 70mm – 100mm



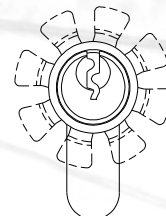
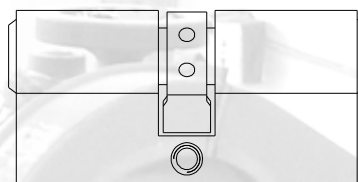
LK5283

LK5283 with 4 anti-functions
anti-drill, anti-pick, anti-bump, anti-snap
and 6pins, size: 70mm – 100mm

Euro Profile Cylinders- Yale Keyway Series

Euro Profile Cylinder with Eight Turning Position (LK5256)

Brass profile lock body with sintered cam and 3 keys. 8 different cam position is provided for customer need.



Euro Profile Cylinder with Panic Function (LK1788E)

Yale keyway cylinder. Brass extruded lock body with sintered cam and 3 keys.

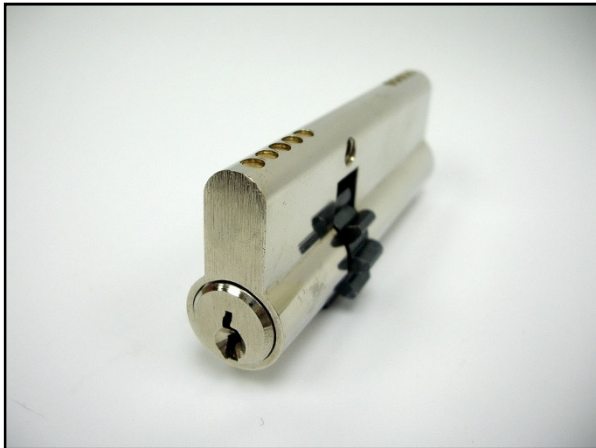
* Cylinder will operate even a key has been left on the opposite side of the cylinder.



Euro Profile Cylinders- Yale Keyway Series

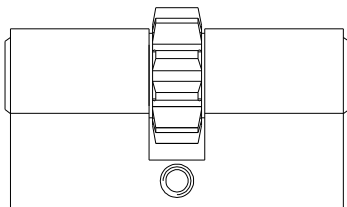
Euro Profile Cylinder with Gear Wheel (LK5147)

Brass extruded lock body with sintered cam and 3 keys.

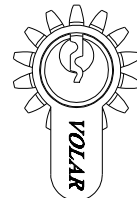
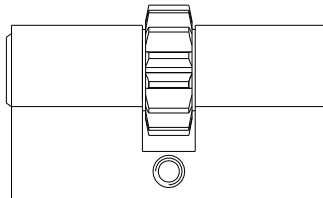


For operating the multiple-bolt locks

a) 10 teeth- available upon request
with minimum additional charge



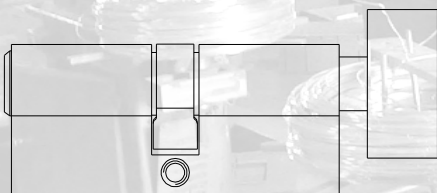
b) 14 teeth- available upon request
with minimum additional charge



Euro Profile Cylinder with Thumb Turn (LK1789)

Brass extruded lock body with sintered cam and 3 keys.

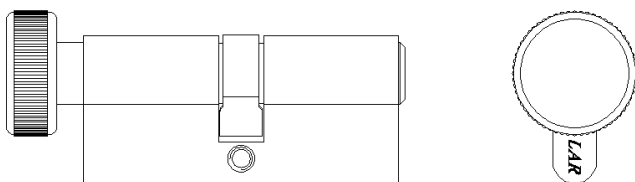
Key operating on one side. Thumb turn on one side with
positioning bearing on the thumb turn side.



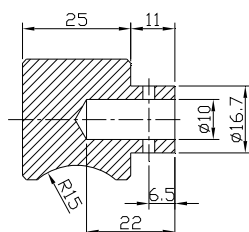
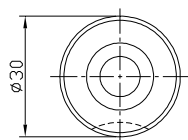
Euro Profile Cylinders- Yale Keyway Series

Euro Profile Cylinder Bathroom Series (LK5044)

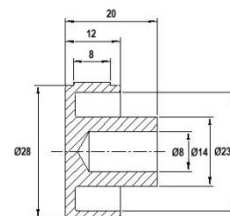
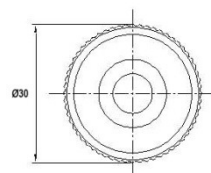
Brass extruded lock body with sintered cam.



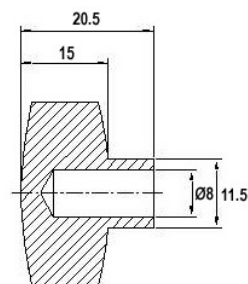
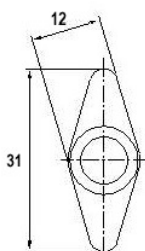
Available shape of thumb turn



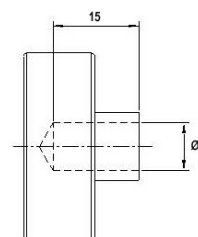
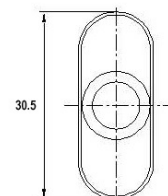
Cylindrical



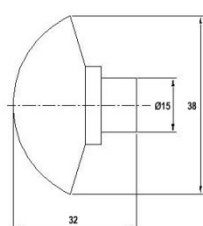
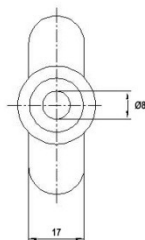
Round



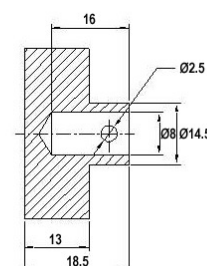
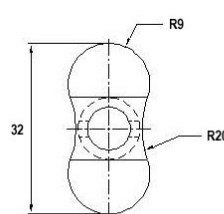
Rhombus



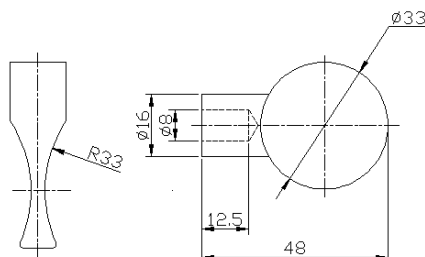
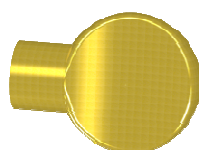
Oval



Fan



Peanut



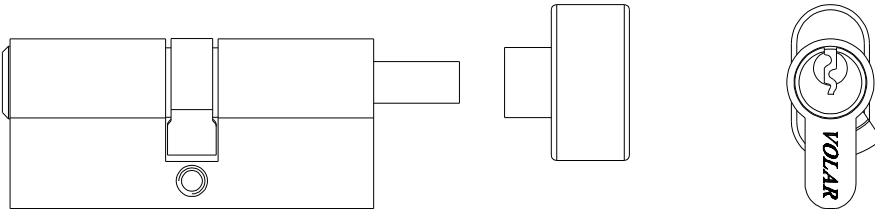
Coin

Euro Profile Cylinders- Yale Keyway Series

Euro Profile Cylinder with Changeable Knob Turning

Yale keyway cylinder. Brass extruded lock body with sintered cam and 3 keys.

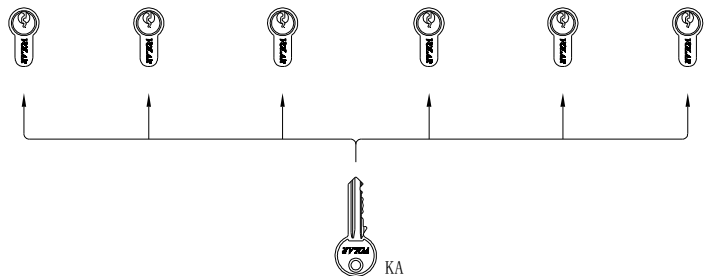
Changeable fixing pin + Hexagon Screw + Thumb Turn



Special Keying systems

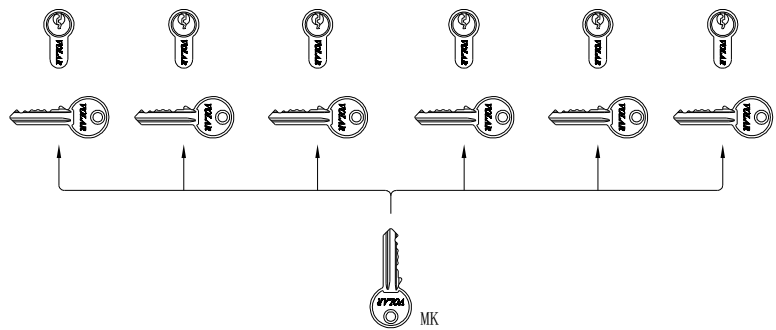
a) Key alike (KA)

All cylinders have the same bitting and the same key can open all



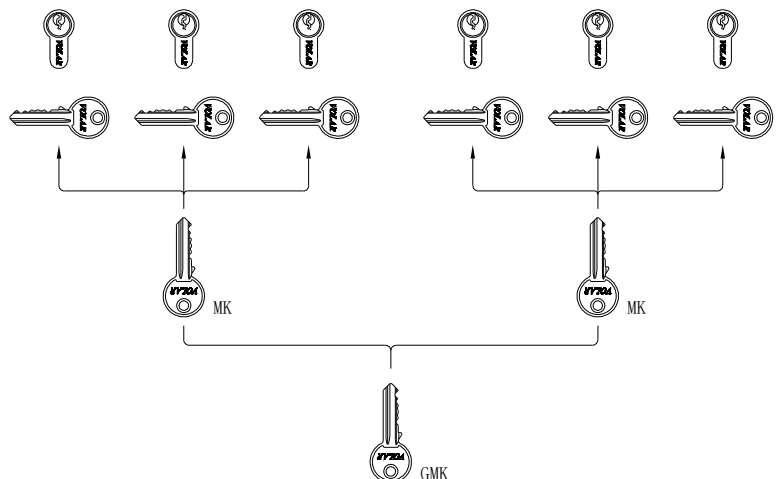
b) Master key (MK)

Each cylinder of a group has its individual bitting but all can be opened by the master key.



c) Grandmaster key (GMK)

All cylinders of two or more MK groups can be opened by the grandmaster key.



Euro Profile Cylinders – Single Row Flat Point Key Series

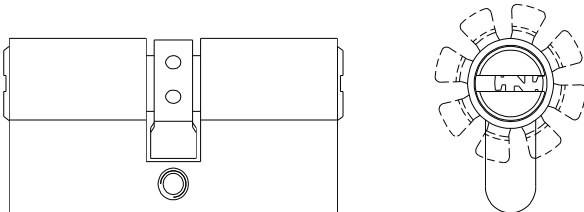
Anti-drill Pins (LK5102)

Brass profile lock body with sintered cam. Single row flat pointed key with 1 anti-drill pin.



Eight Turning Position (LK5262)

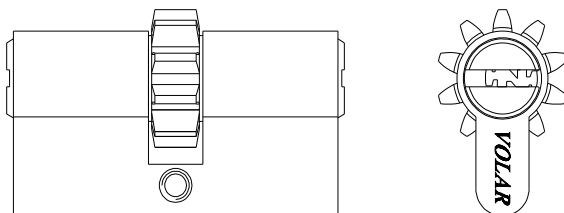
Brass profile lock body. Single row flat pointed key with eight turning position.



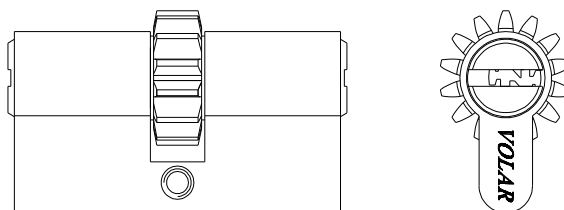
Gear Wheel System (LK5148)

Brass profile lock body. Single row flat pointed key

a) with gear wheel cam 10 teeth



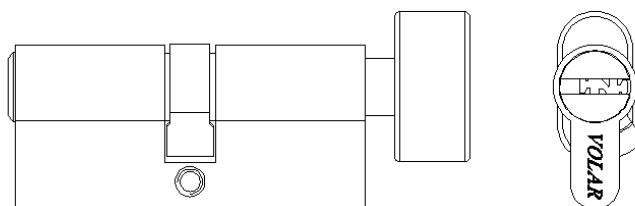
b) with gear wheel cam 14 teeth



Euro Profile Cylinders – Single Row Flat Point Key Series

Thumb Turn Series (LK5179)

Brass profile lock body. Single row flat pointed key with thumb turn. Available shape of thumb turn, please refer to LK5044



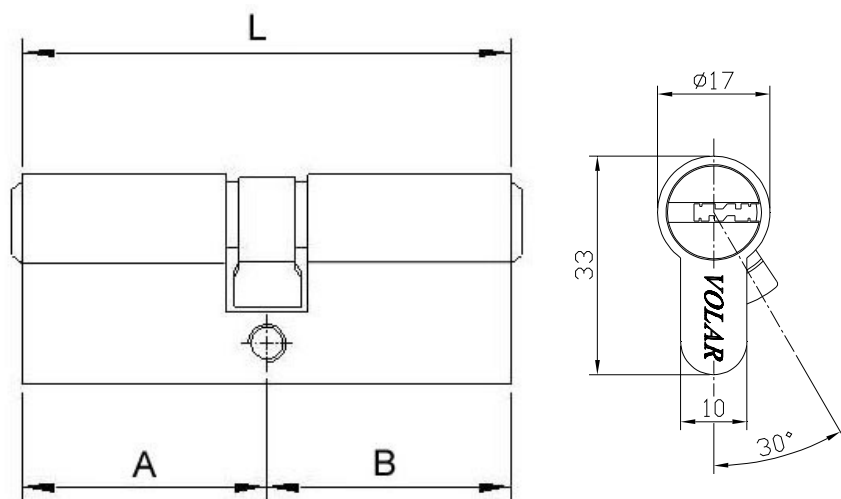
Euro Profile Cylinders – Double Row Flat Point Key Series

C. Double Row Flat Point Key Series(LK5103)

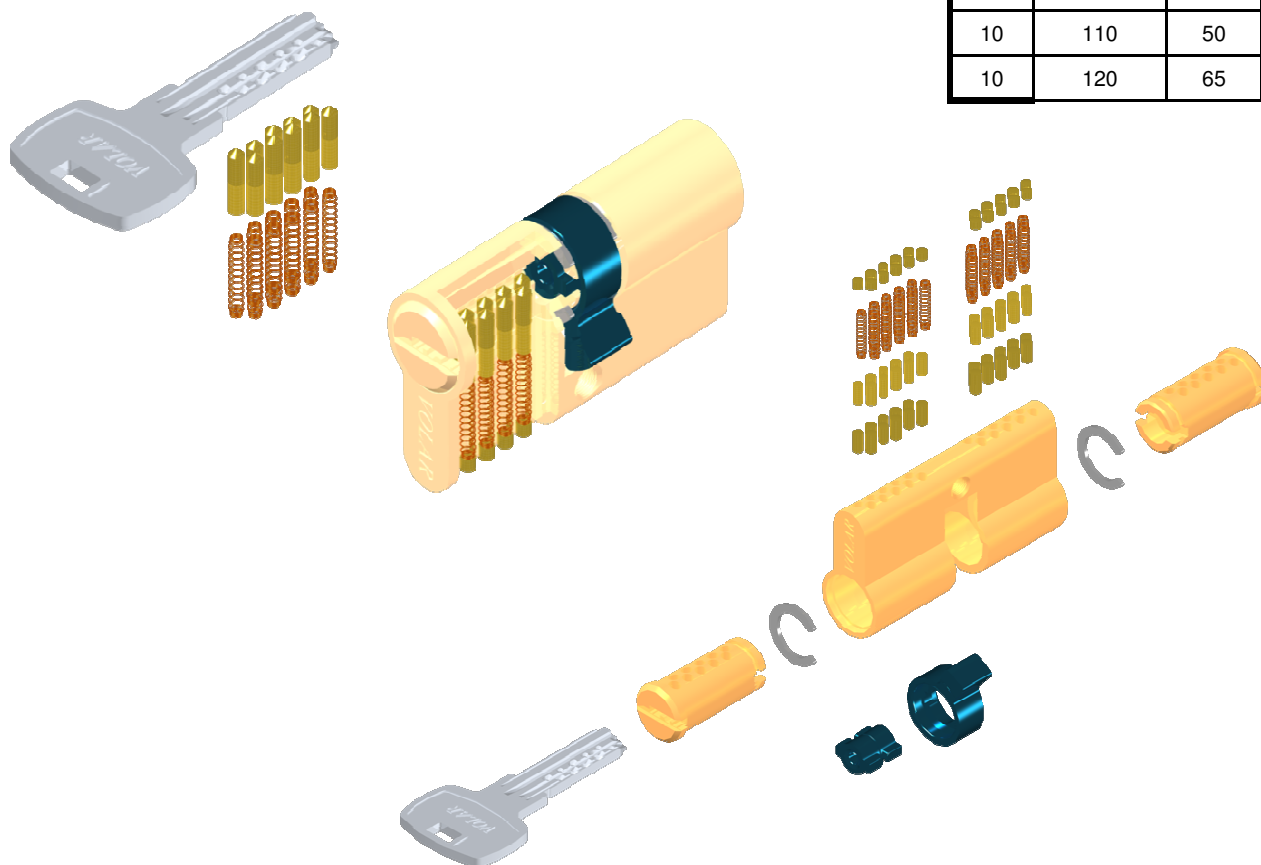
Brass euro profile lock body with sintered cam and 5 brass keys

Function available for Order

- Anti-drill Pins
- Eight Turning Position
- Gear Wheel Series (10 teeth / 14 teeth)
- Single Side with Thumb Turn



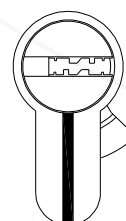
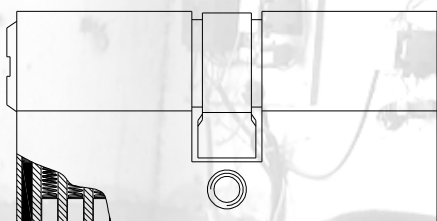
Pin	L(mm)	A	B
8	56	28	28
10	60	30	30
10	62	30	32
10	65	30	35
10	70	30	40
10	70	35	35
10	75	30	45
10	75	35	40
10	80	30	50
10	80	40	40
10	85	30	55
10	85	40	45
10	90	45	45
10	95	30	65
10	95	40	55
10	100	40	60
10	100	50	50
10	105	50	55
10	110	50	60
10	120	65	55



Euro Profile Cylinders – Double Row Flat Point Key Series

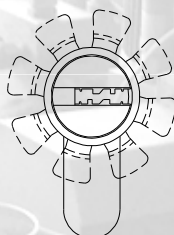
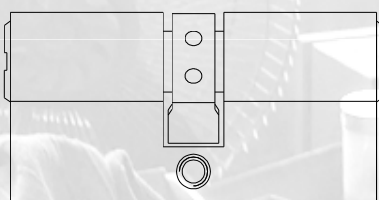
Anti-drill Pins (LK5103)

Brass profile lock body with sintered cam. Double row flat pointed key with 1 anti drill pin.



Eight Turning Position (LK5263)

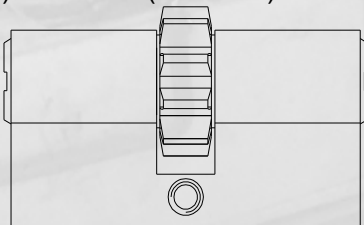
Brass profile lock body with sintered cam, 8 different cam position is provided for customer need.



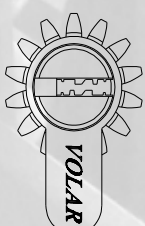
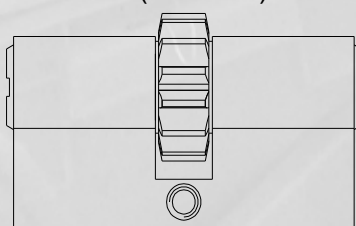
Gear Wheel Series (LK5265 / LK5309)

Brass profile lock body with sintered gear wheel cam, for operating the multiple bolt lock

a) 10 teeth (LK5265)



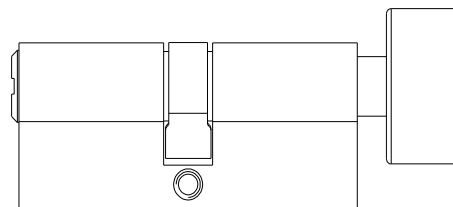
b) 14 teeth (LK5309)



Euro Profile Cylinders – Double Row Flat Point Key Series

Single Side with Thumb Turn (LK5204)

Available shape of thumb turn, please refer to LK5044



Euro Profile Cylinders – Telescopic Pin Flat Point Key Series

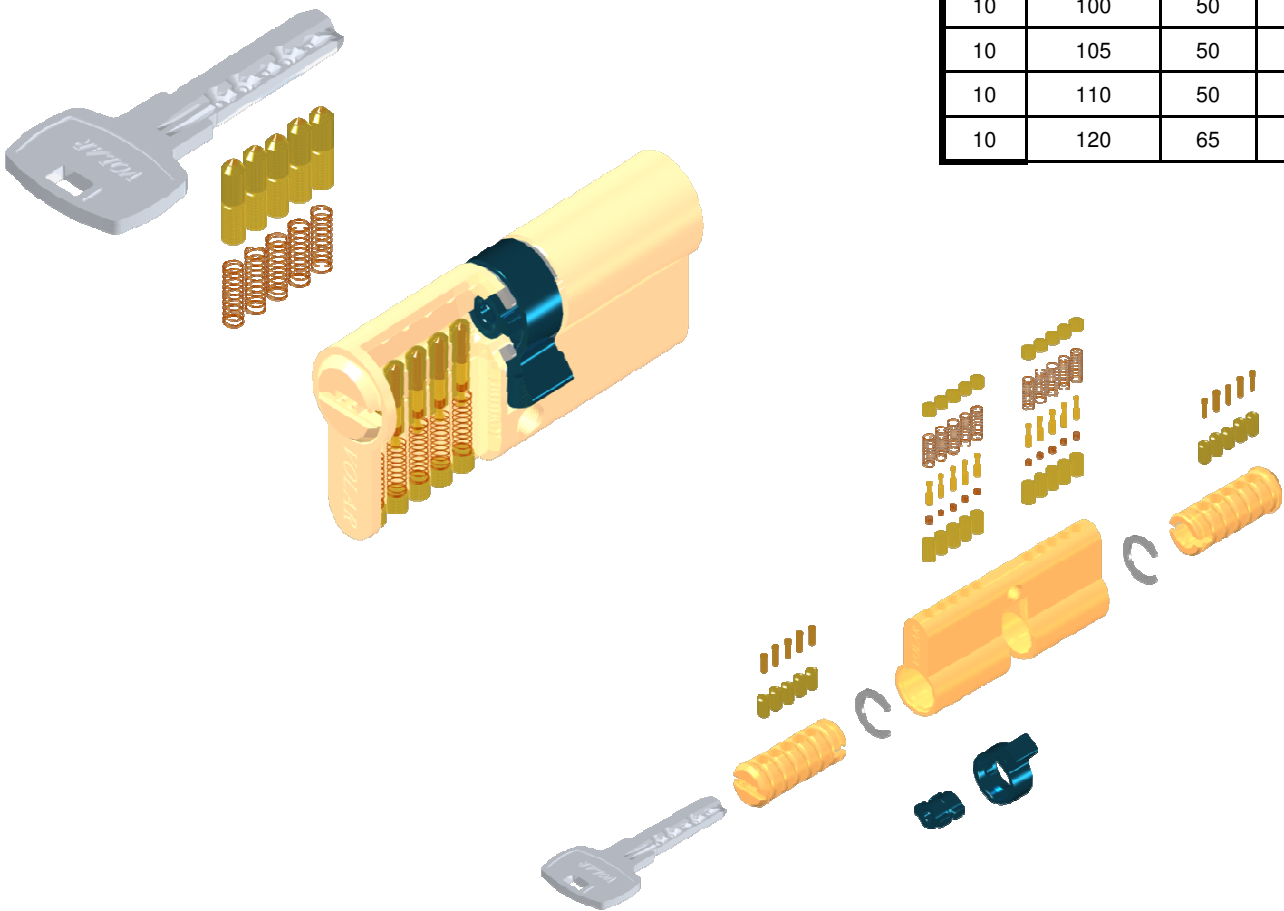
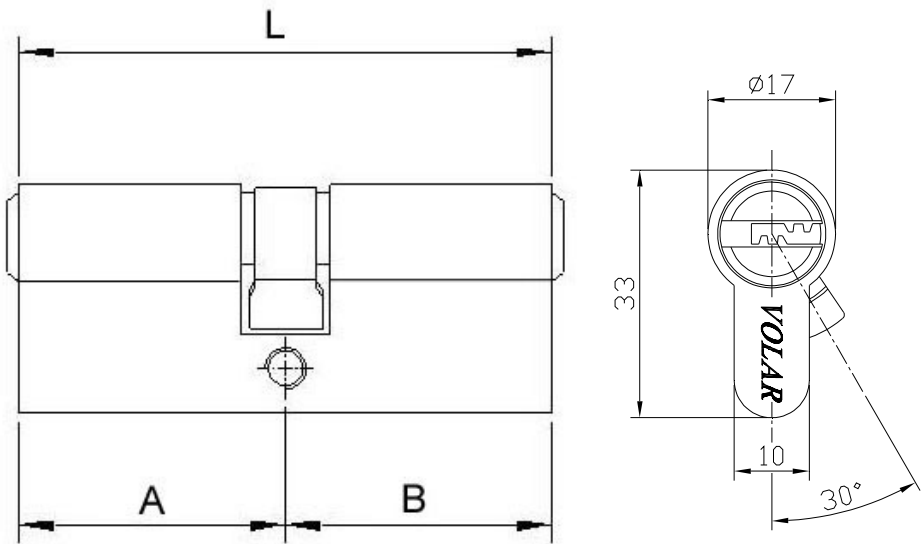
D. Telescopic Pin Flat Pointed Key Series(LK5008)

Brass profile lock body with sintered cam and 4 brass keys

Function available for Order

- Gear Wheel Series (10 teeth / 14 teeth)
- Single Side with Thumb Turn

Pin	L(mm)	A	B
8	56	28	28
10	60	30	30
10	62	30	32
10	65	30	35
10	70	30	40
10	70	35	35
10	75	30	45
10	75	35	40
10	80	30	50
10	80	40	40
10	85	30	55
10	85	40	45
10	90	45	45
10	95	30	65
10	95	40	55
10	100	40	60
10	100	50	50
10	105	50	55
10	110	50	60
10	120	65	55



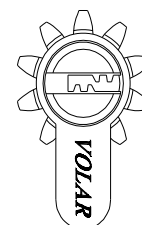
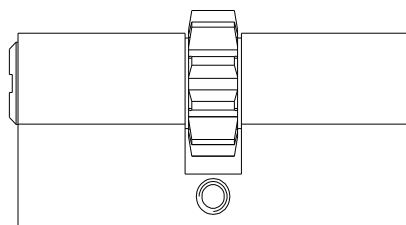
Euro Profile Cylinders – Telescopic Pin Flat Point Key Series

Telescopic Pin Gear Wheel Series (LK5149)

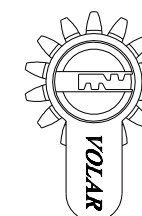
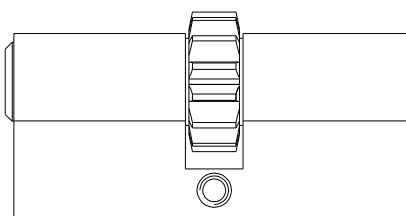
For operating the multi bolt lock



a) 10 teeth

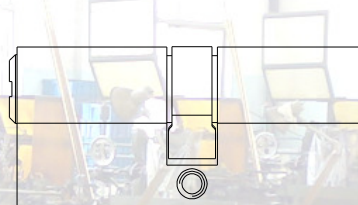


b) 14 teeth



Telescopic Pin Single side with Thumb Turn (LK5266)

Available shape of thumb turn, please refer to LK5044



Euro Profile Cylinders – Oval Profile Cylinder Series

E. Oval Profile Cylinder

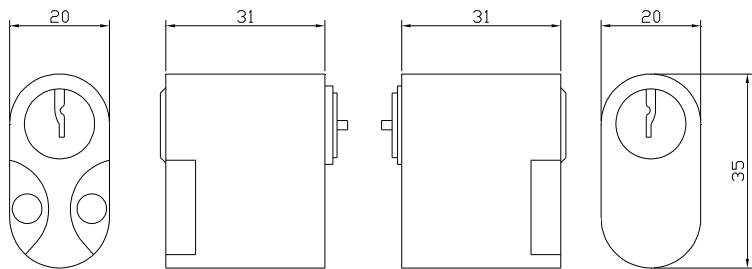
Brass profile lock case

Scandinavian Oval
Large Oval
Small Oval

Scandinavian Oval

For using with Scandinavian mortise lock case, fixed to lock case with 2 steel screws supplied with accessory set.

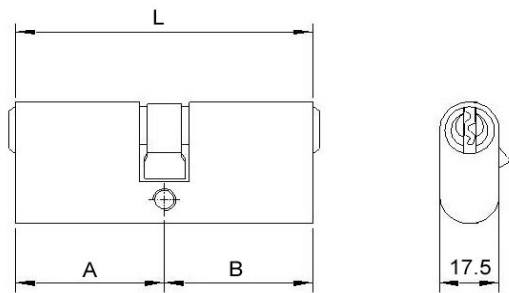
a) “S” keyway series – LK5278 / LK5310



LK5278 – Scandinavian Oval Cylinder

Large Oval

a) “S” keyway series – LK5016

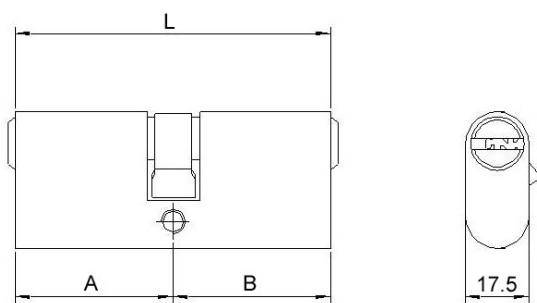


L	A	B
60	30	30
70	35	35
80	40	40

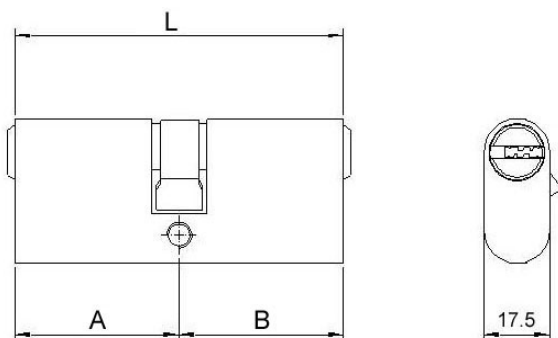


Euro Profile Cylinders – Oval Profile Cylinder Series

b) Single row flat pointed key series – LK5269



c) Double row flat pointed key series – LK5270

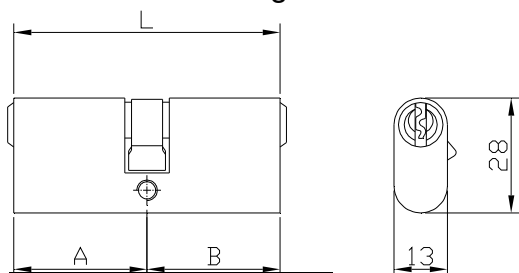


d) Single side with turn knob – LK5271

Available shape of thumb turn, please refer to LK5044

Small Oval (LK1855 / LK1855C)

a) Twins cam and single cam are available



L	A	B
54	27	27
60	30	30



LK1855

LK1855 Single cam



LK1855C Twins cam

b) Single side with turn knob – LK5272

Available only round / rhombus shape of thumb turn, please refer to LK5044



Rim Cylinder

Brass profile housing use with rim lock.

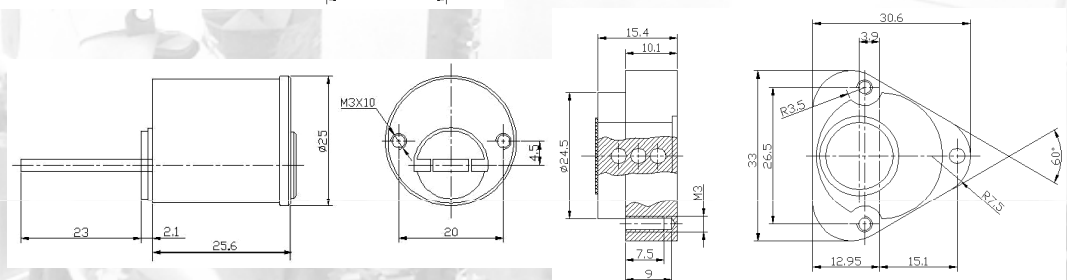
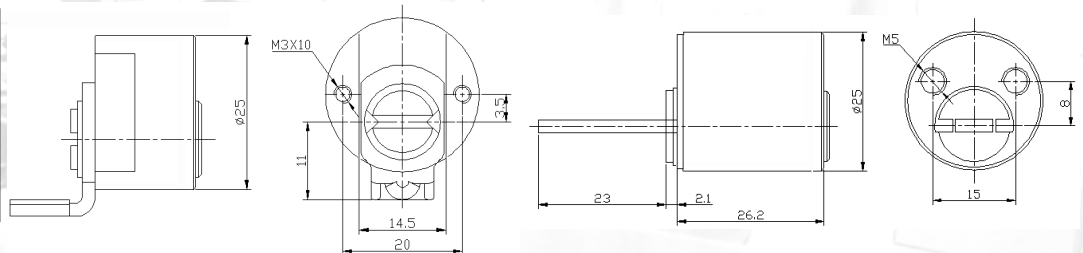
a) 'S' keyway

i) Single side (5 pins) – LK5036



ii) Double cylinder (External & Internal: 5 pins + 3 pins) – LK5030

* Round & triangle internal cylinder are available for order – LK5035



b) Single row flat pointed keyway

Brass profile housing for using with rim lock, with 5 flat pointed keys

i) Single side (6 pins) – LK5206

suspend



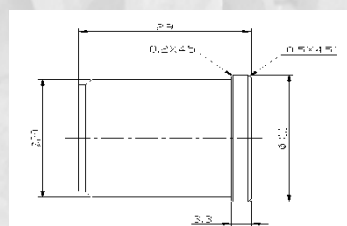
ii) Double cylinder (External & Internal: 6 pins + 4 pins) – LK5197

* Round & triangle internal cylinder are available for order – LK5282



iii) Large round cylinder – LK5273

Dia: 29mm



Rim Cylinder

c) Double row flat pointed keyway

Brass profile housing for using with rim lock, with 5 flat pointed keys

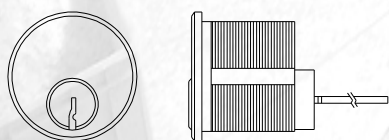
i) Single side

Mortise Cylinder

a) Mortise Rim Cylinder – round threaded

Brass profile for using with rim lock and the locking devices accepting screws rim cylinders

i) 'S' keyway 5/6 pins – LK5275

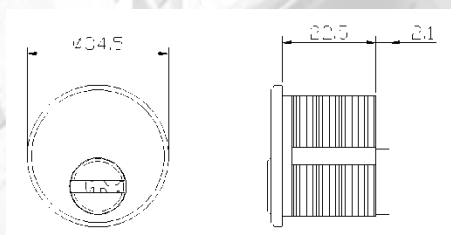


bi) Brass Mortise Cylinder

Brass profile for using with locking devices accept screw-in cylinders.

- 'S' keyway 5/6 pins

i) Mortise single cylinder – LK5194



ii) Mortise double cylinder – LK5243



- Single row flat pointed keyway

i) Mortise single cylinder – LK5276



Mortise Cylinder

bii) Zinc Alloy Mortise Cylinder

Zinc alloy die-casting profile for using with locking devices accept screw-in cylinders.

- 'S' keyway 5/6 pins

i) Mortise single cylinder – LK5242

ii) Mortise double cylinder – LK5222



Others



LK5304 Brass Rekeyable Double Cylinder with Schlage Keyway



LK5184 Zinc Alloy Euro Cylinder with Wafer Tumbler



LK5215 Zinc Alloy Rectangular Double Cylinder



LK5054 Zinc Alloy Euro Cylinder



LK5038 Brass Oval Cylinder with Peanut Turn



LK5257 Brass Telescopic Oval Single Cylinder

Others



LK5320

LK5320 Brass Single Profile Cylinder with Brass Thumb Turn



LK5319

LK5319 Brass Profile Cylinder with 3 keys, 5 pins each side with anti-bump, anti-drill, anti-snap, anti-pick and s/s bar bridge



LK5316

LK5316 Brass Mortise single cylinder, Dia: 29mm, 5 pins, with aluminium face ring



LK1772

LK1772 Zinc Alloy Patio Door Lock



LK5312

LK5312 Brass Cylinder



LK5188

LK5188 Brass Bullet Lock Cylinder

Others



LK5310

LK5310 Australian Oval Cylinder, length: 34mm



LK5314

LK5314 Australian Brass Oval Cylinder with Turn Snib and X-cam plate, length: 54mm



LK5211

LK5211 Solid Brass Key-in-Knob Mortise Cylinder



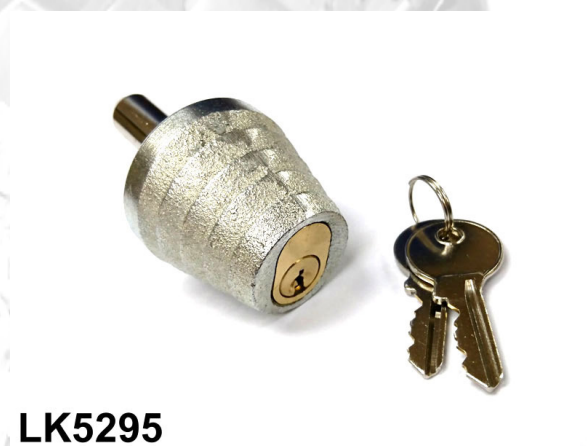
LK5233

LK5233 Brass Cylinder



LK5286

LK5286 Brass Cylinder Lock



LK5295

LK5295 Brass Hopkins Type Bullet Lock, dia: 41 x height: 36mm, pin length: 41mm

Others



LK5321

LK5321 Brass Profile Cylinder



LK5328

LK5328 Brass High Security Cylinder with 5pins each side, anti-pick, anti-drill, anti snap and anti-pick function



LK5325

LK5325 Brass Single Profile Cylinder with Brass Thumb Turn



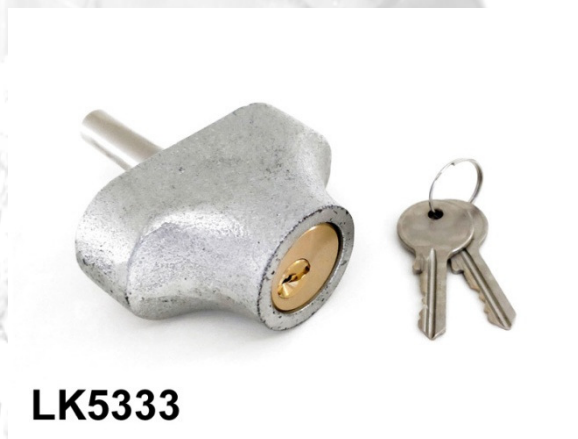
LK5329

LK5329 Brass Telescopic Pin Profile Single Cylinder with Dust Proof Cover



LK5008

LK5008 Brass Profile Cylinder with 5 Telescopic Pined Keys



LK5333

LK5333 Brass Round Bullet Lock Cylinder, dia: 25mm, steel pin length: 50mm

Others



LK5334

LK5334 Brass Profile Cylinder with 5 Telescopic Pins and 1 extra security pin key



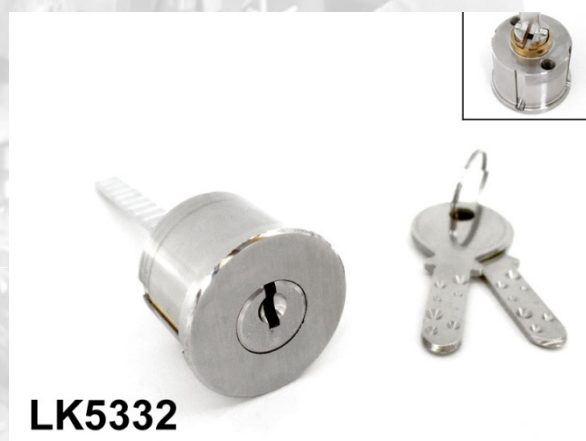
LK5324

LK5324 Brass Telescopic Pin Mortise Cylinder



LK5326

LK5326 Brass Screw-in Single Mortise Cylinder with Thumb Turn



LK5332

LK5332 Brass Rim Lock with Flat Pointed keys



LK5330

LK5330 Brass Telescopic Pin Mortise Cylinder with Dust Proof cover